



MONTHLY MEMBERSHIP PROGRESS REPORT

District 27 C1

Results as of: 01/31/2019

GMT: OPEN

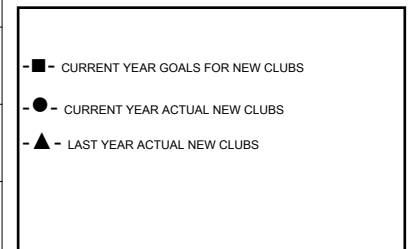
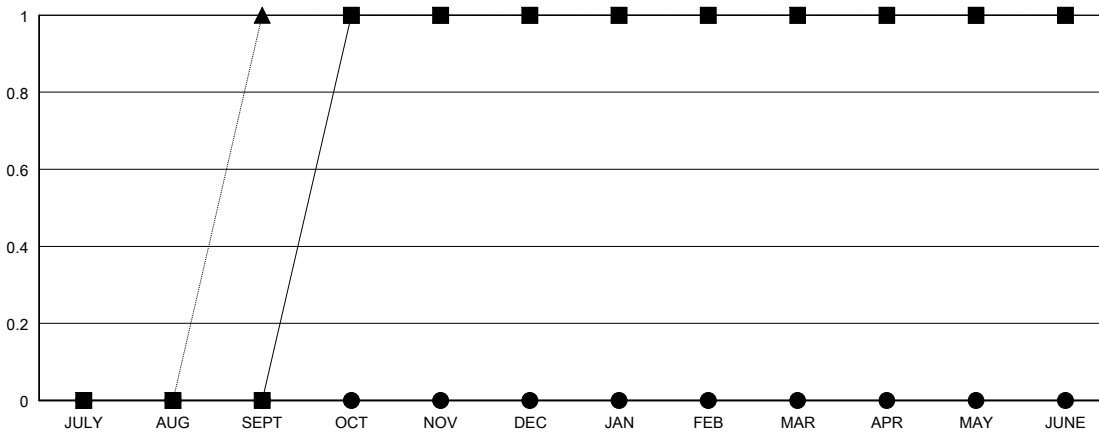
LOCATION WISCONSIN

GMT CA

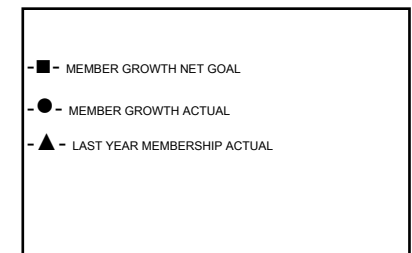
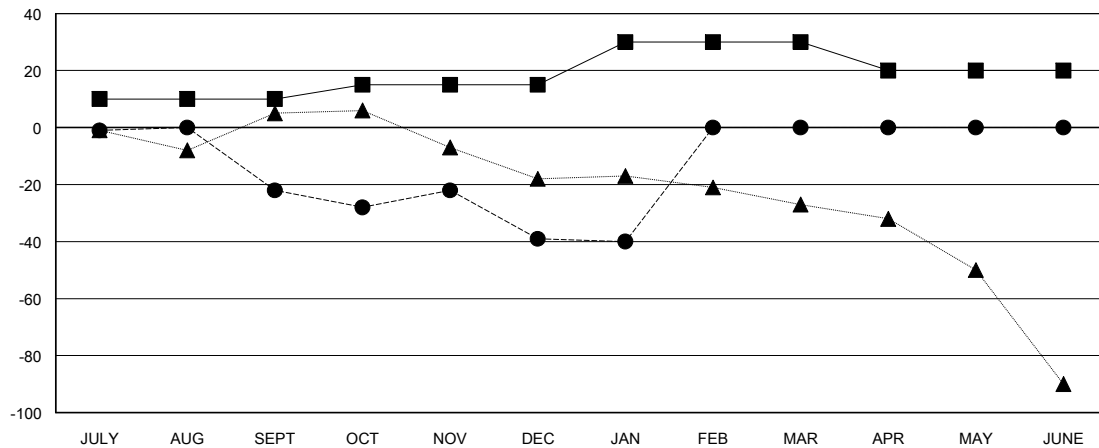
Clubs			
RESULTS FOR 2018-2019			
QUARTER	NEW CLUB GOAL	NEW CLUBS	DROPPED CLUBS
JULY/AUG/SEPT	0	0	2
OCT/NOV/DEC	1	0	0
JAN/FEB/MAR	0	0	0
APR/MAY/JUNE	0	0	0

Members			
RESULTS FOR 2018-2019			
QUARTER	MEMBER GROWTH NET GOAL	MEMBER GROWTH ACTUAL	DROPPED MEMBERS ACTUAL (including transfers)
JULY/AUG/SEPT	10	27	47
OCT/NOV/DEC	5	13	28
JAN/FEB/MAR	15	12	12
APR/MAY/JUNE	-10	0	0

GOALS AND ACTUAL NEW CLUBS CUMULATIVE



GOALS AND ACTUAL MEMBERS CUMULATIVE



DROPPED CLUBS: 2	21 CLUBS OF 55 ADDED 1 OR MORE NEW MEMBERS	<u>GENDER DISTRIBUTION</u> MALE 1,103 (75.03%) FEMALE 367 (24.97%) Women Percentage Fiscal Year Goal: 26%
<u>DROPPED MEMBERS</u> DECEASED 12 CLUB CANCELLED 0 OTHER 75 TOTAL 87	CLICK HERE FOR CUMULATIVE MEMBERSHIP DATA	TOTAL FAMILY UNIT MEMBERS 368 FAMILY MEMBERS PAYING HALF DUES 186